



TOM HESSIN
1870



Charles Collection





Charles Collection

Bringing HERITAGE, expertise, creativity and contemporary design to create fine writing instruments for everyday writing. The TOM HESSIN, **CHARLES COLLECTION** is an enviable design that will doubtlessly be the eye-candy of every office meeting, and will flawlessly carry you through to any album-worthy signature occasion.

The **CHARLES COLLECTION** is the culmination of five generations in the pen industry; each generation represented by a diamond design elegantly depicted in the clip detail. With expertise dating back to 1870, the **CHARLES COLLECTION** earns its moniker from the 'Charles' name that spans the family tree.



TOM HESSIN
1870
◆◆◆◆

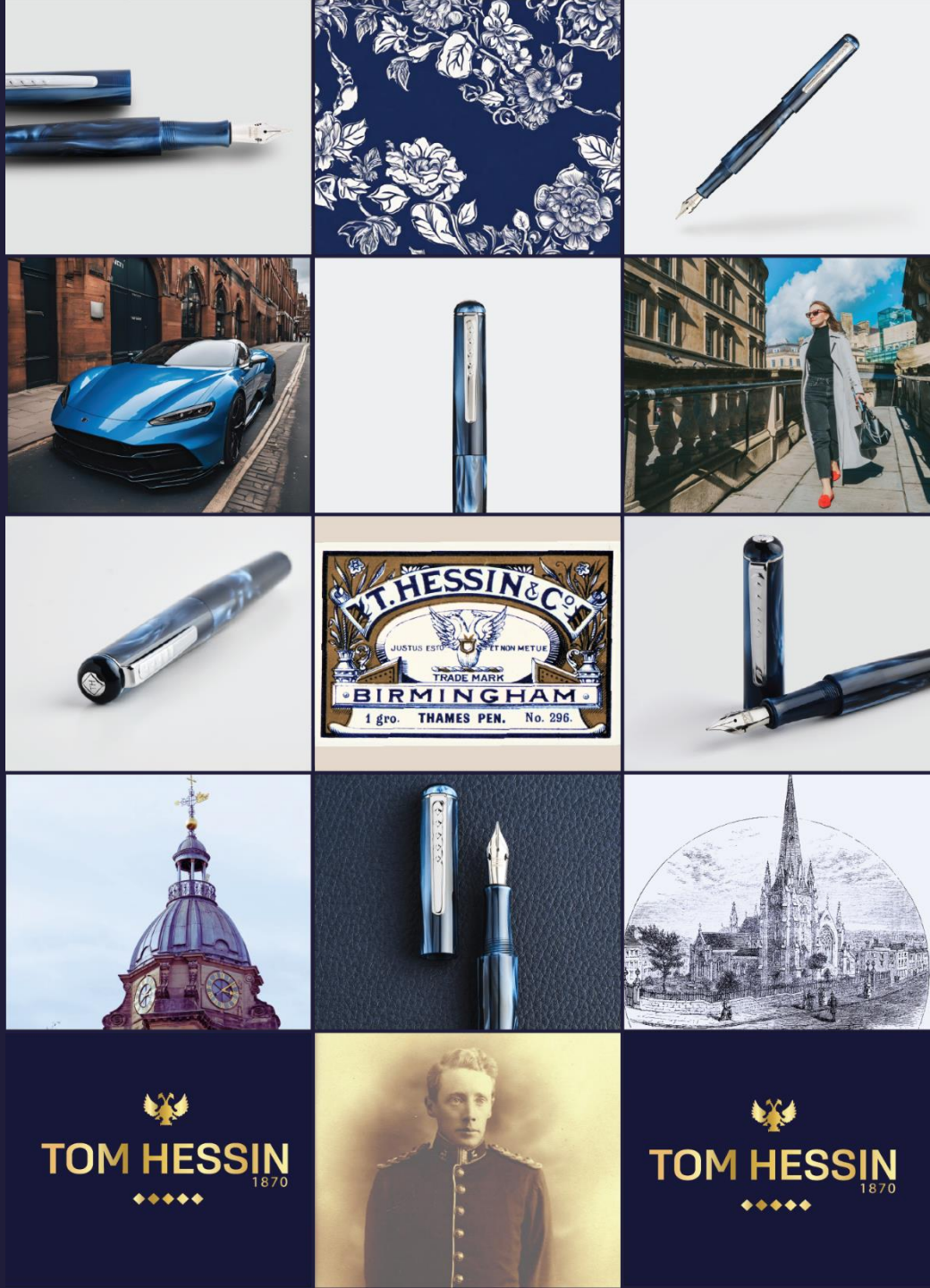


TOM HESSIN
1870



Charles Signature Blue

Charles Signature Blue



Charles Signature Blue



Charles Signature Blue

CHARLES SIGNATURE BLUE Fountain Pen is inspired by the original T. HESSIN & CO logo. SIGNATURE BLUE has been carefully chosen, depicting the blue tones of old, and now bringing together to create a pen that embodies MODERN HERITAGE.

Today the TOM HESSIN, SIGNATURE BLUE is a fountain pen, carefully crafted using high grade European resin with an elegant and modern finish. The navy blue tones of the pen are interspersed with complimentary blue tones for a truly unique Fountain Pen that will complement any top pocket or clutch.



Charles Signature Blue





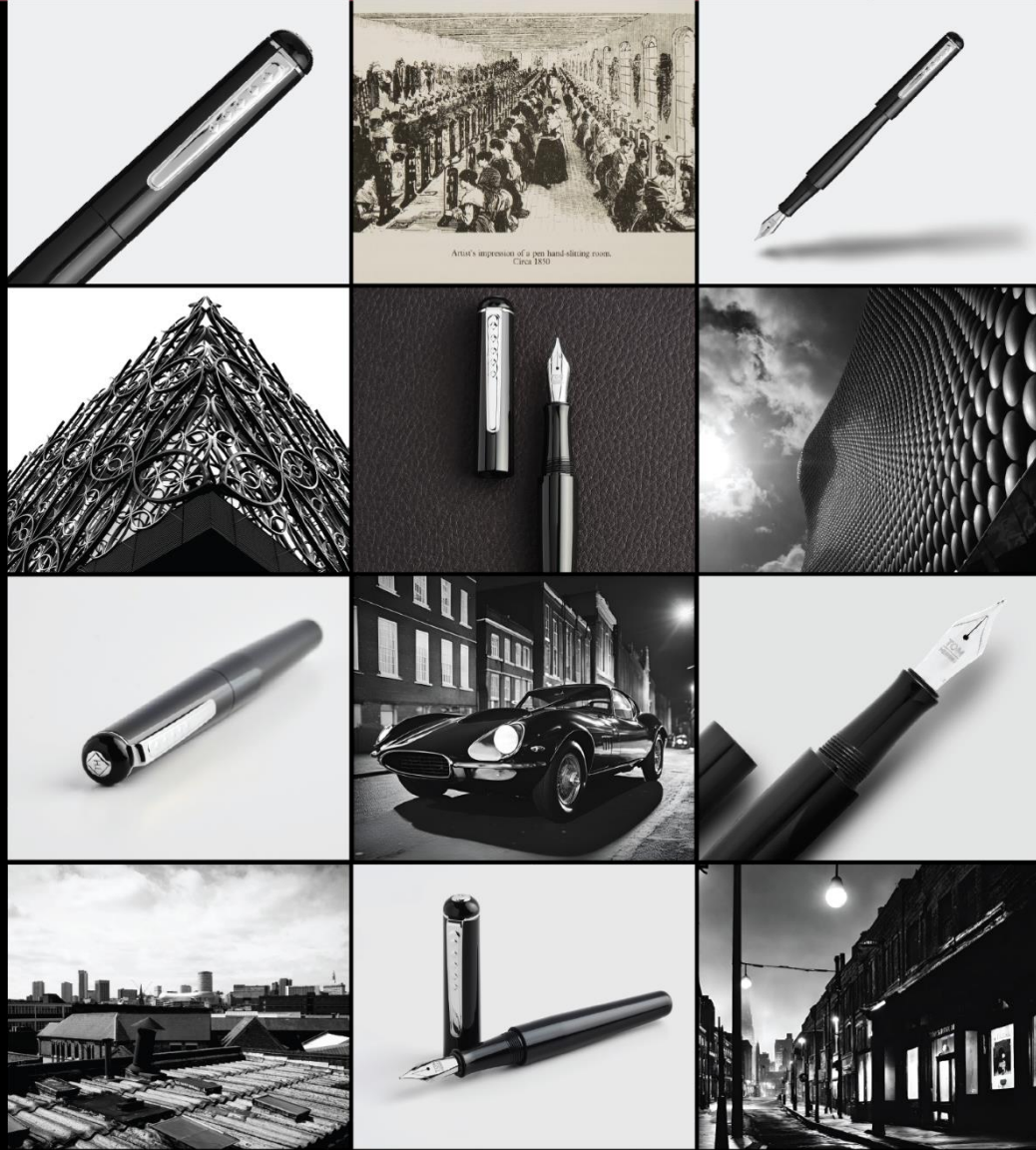
TOM HESSIN
1870



Charles Birmingham Noir



Charles Birmingham Noir



Charles Birmingham Noir



Charles Birmingham Noir

CHARLES BIRMINGHAM NOIR will take you straight from the office to a working lunch. A Fountain Pen inspired by 18th Century heritage in Birmingham's Jewellery Quarter. Once the centre of a thriving global pen industry, Birmingham is now the UK's second city with a vibrant and trendy scene.

BIRMINGHAM NOIR is a fountain pen, carefully crafted using high grade European resin with an elegant and modern finish. The black finish of the pen represent the industrial era, and modernised with a glossy tapered barrel and chrome trims.



TOM HESSIN
1870



Charles Birmingham Noir





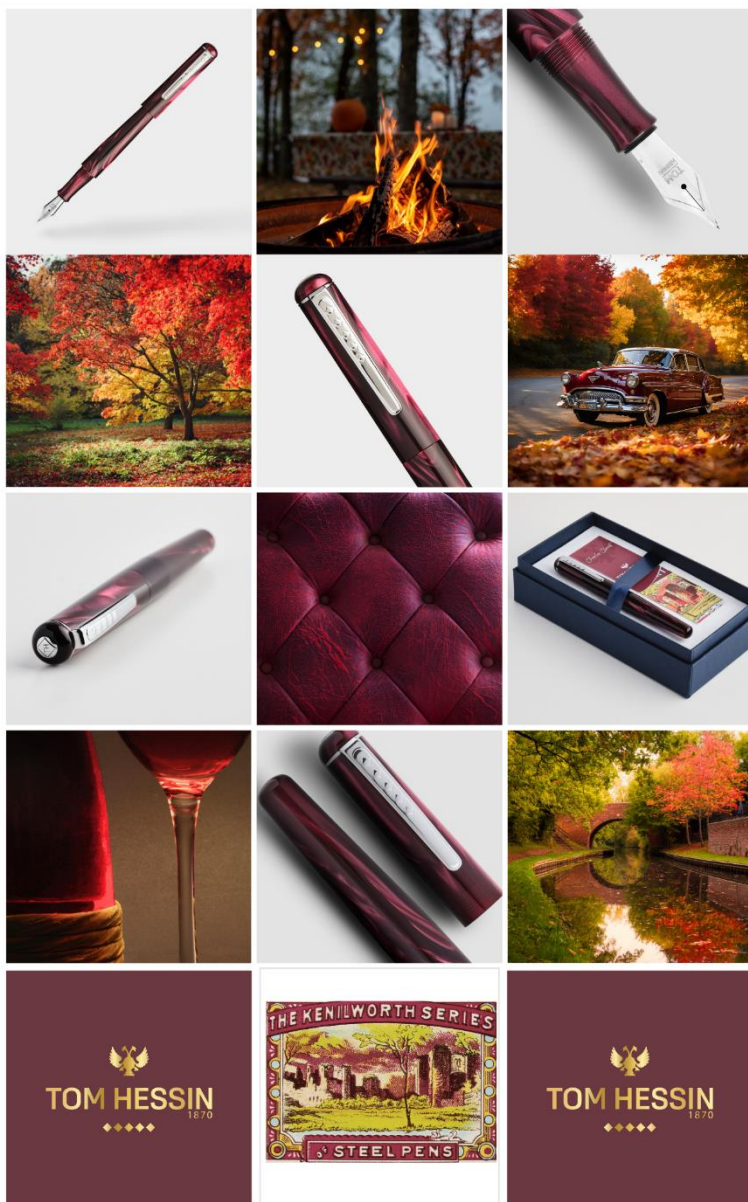
TOM HESSIN
1870



Charles Castle Claret



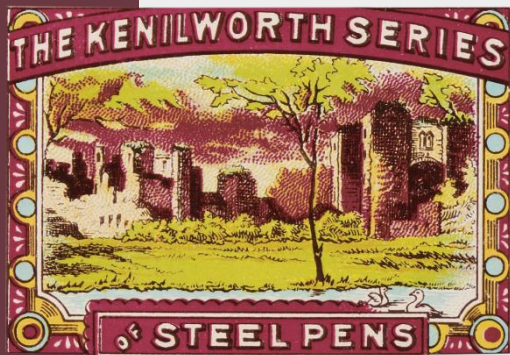
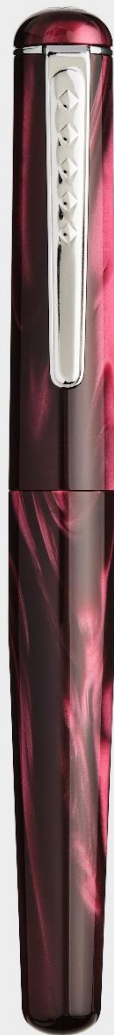
Charles Castle Claret



Put on the fire, grab a blanket and
enjoy a little bit of cosy quiet with
your Tom Hessin, Castle Claret
fountain pen.



Charles Castle Claret



Charles Castle Claret

CHARLES CASTLE CLARET Fountain Pen is inspired by The Kenilworth Series of Steel Pens, once produced for Kenilworth Castle by T.Hessin.

Today the TOM HESSIN, CHARLES CLARET is a beautiful collaboration of Modern Heritage. A fountain pen, carefully crafted using high grade European resin with an elegant and modern finish. The claret tones of the pen are inspired from T Hessin beginnings with the original 'The Kenilworth Series of Steel Pens' and now are reimagined for a sophisticated pen that will stand the test of time.



Charles Castle Claret





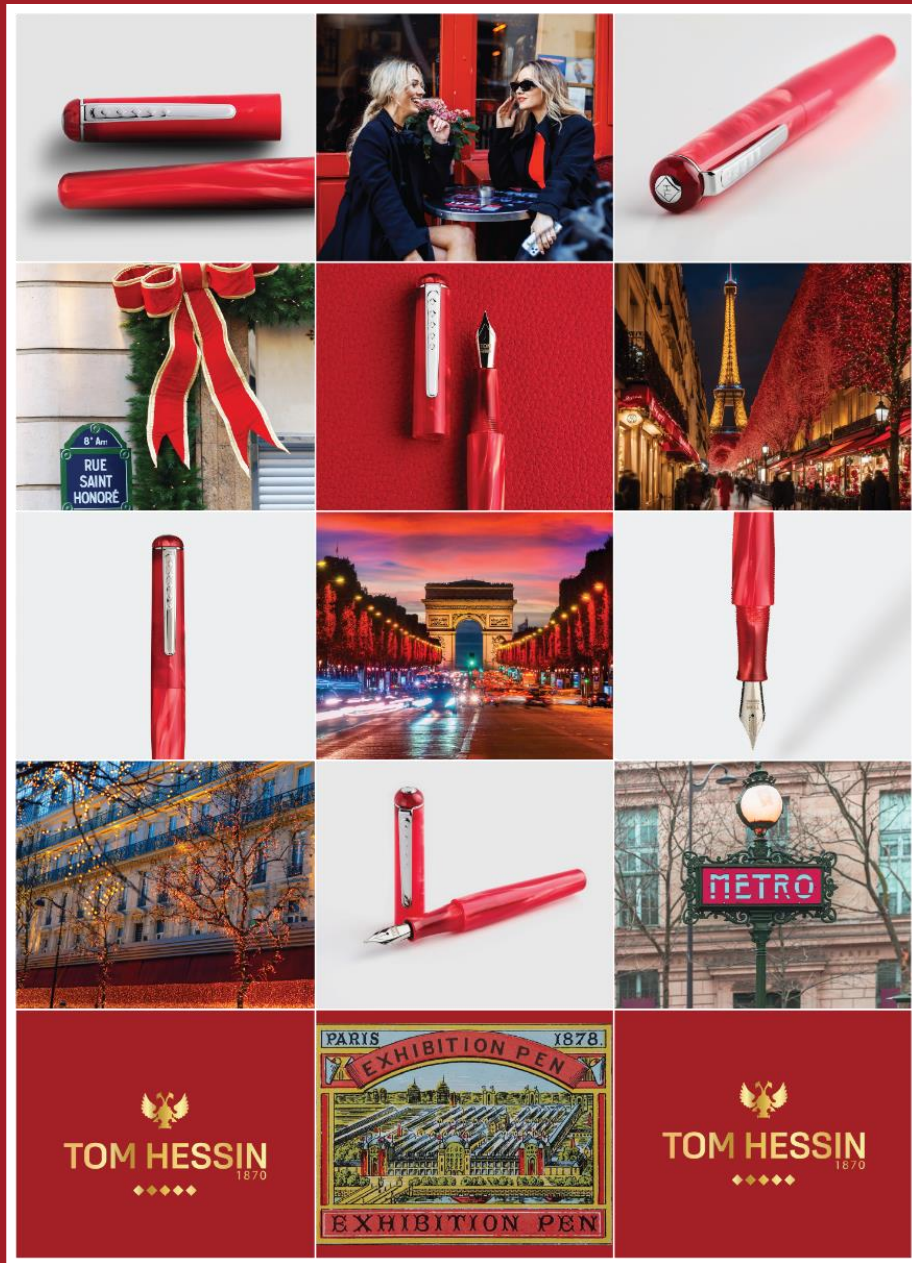
TOM HESSIN
1870



Charles Exhibition Red



Charles Exhibition Red



Inspired by the romance of Paris at Christmas, the Exhibition Red fountain pen brings the season to life. From cosy café notes to reflections on historic boulevards, the Exhibition Red fountain pen is your constant companion.



Charles Exhibition Red



Charles Exhibition Red

CHARLES EXHIBITION RED Fountain Pen is inspired by The Exhibition Pen, inspired by the 1878 Paris Exhibition, by T.Hessin.

Today the TOM HESSIN, EXHIBITION RED is a beautiful collaboration of Modern Heritage. A fountain pen, carefully crafted using high grade European resin with an elegant and modern finish. The bright red tones of the pen are inspired from T Hessin beginnings with the original "Exhibition Pen" and now are reimagined for a sophisticated pen that will stand the test of time.



Charles Exhibition Red

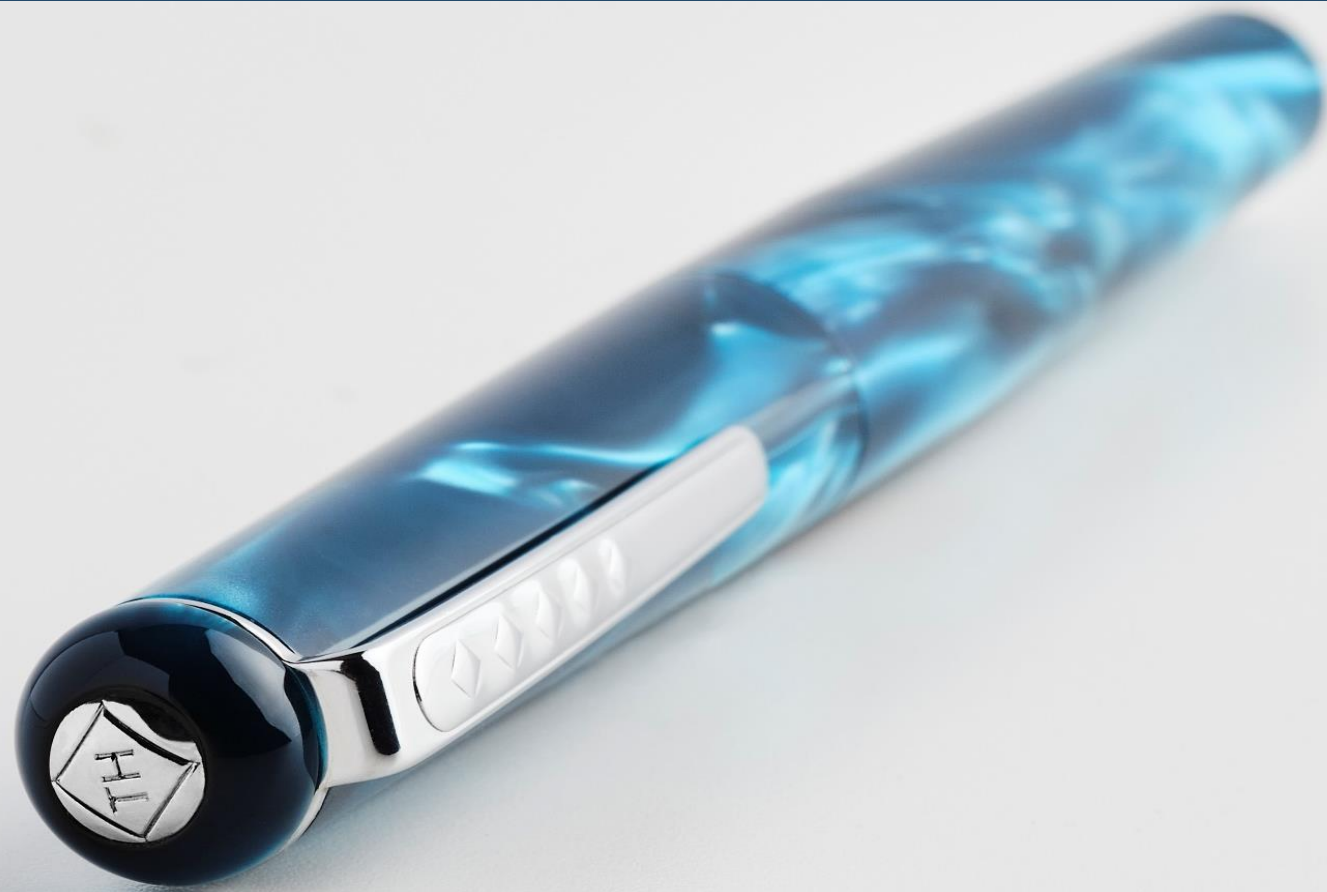




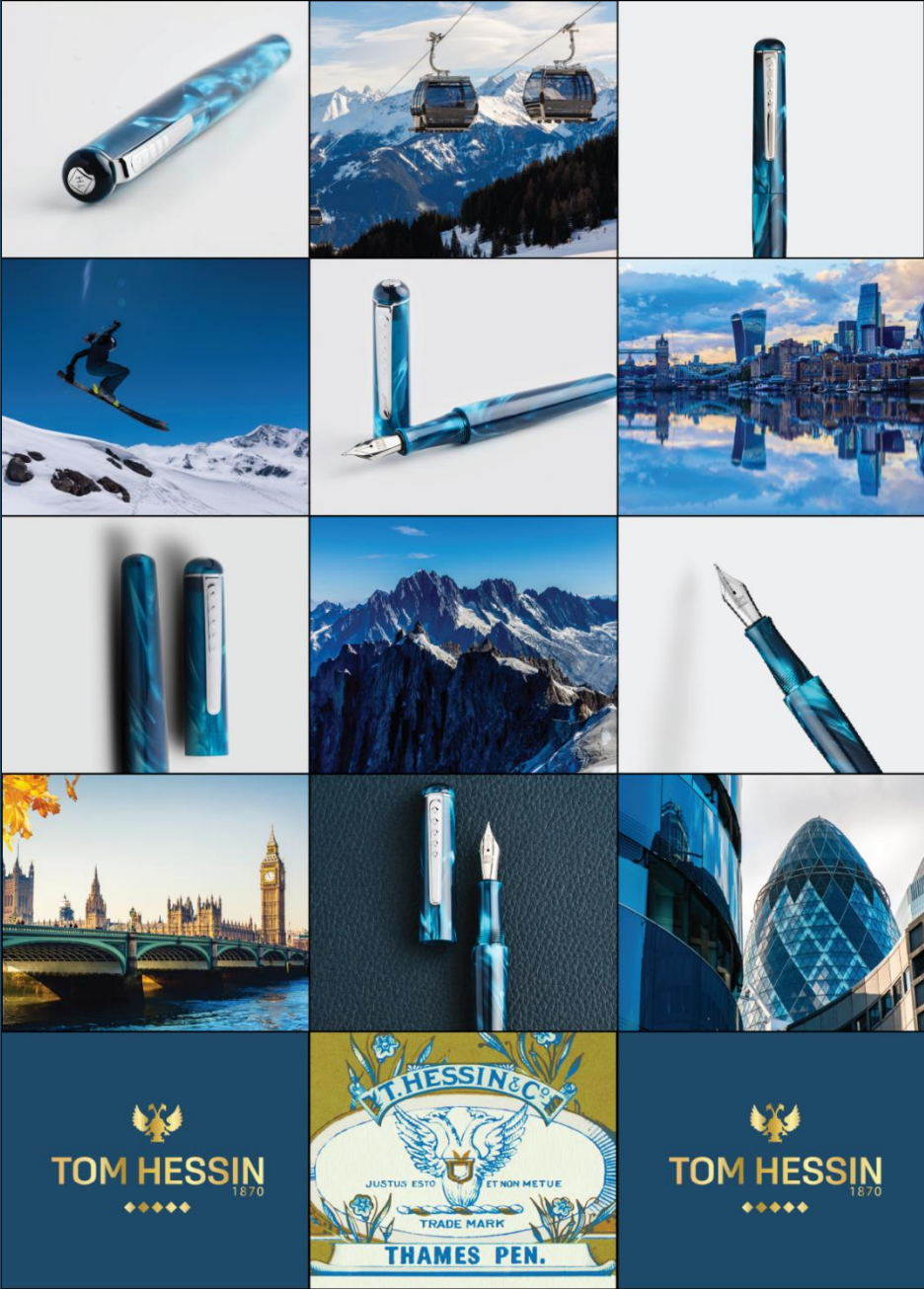
TOM HESSIN
1870



Charles Thames Blue



Charles Thames Blue



*From the city to the slopes, let the
Thames Blue pen be your companion.
Whether you're jotting notes at the office
or journaling at the chalet, Tom
Hessin has got you covered.*



Charles Thames Blue



Charles Thames Blue

CHARLES THAMES BLUE Fountain Pen is inspired by a summer's day on the river Thames, reflecting glorious hues on the iconic architecture that line the capital's great river. When turned in the hand, this pen enjoys changing light, creating intrigue wherever you go. Whether you're working at Canary Wharf or heading to the slopes, the CHARLES THAMES BLUE is an enviable choice.

Today the TOM HESSIN: CHARLES THAMES BLUE is a beautiful collaboration of Modern Heritage. A fountain pen, carefully crafted using high-grade European resin with an elegant and modern finish. The name 'Thames' has been inspired from a heritage dating back to T.Hessin & Co.



Charles Thames Blue





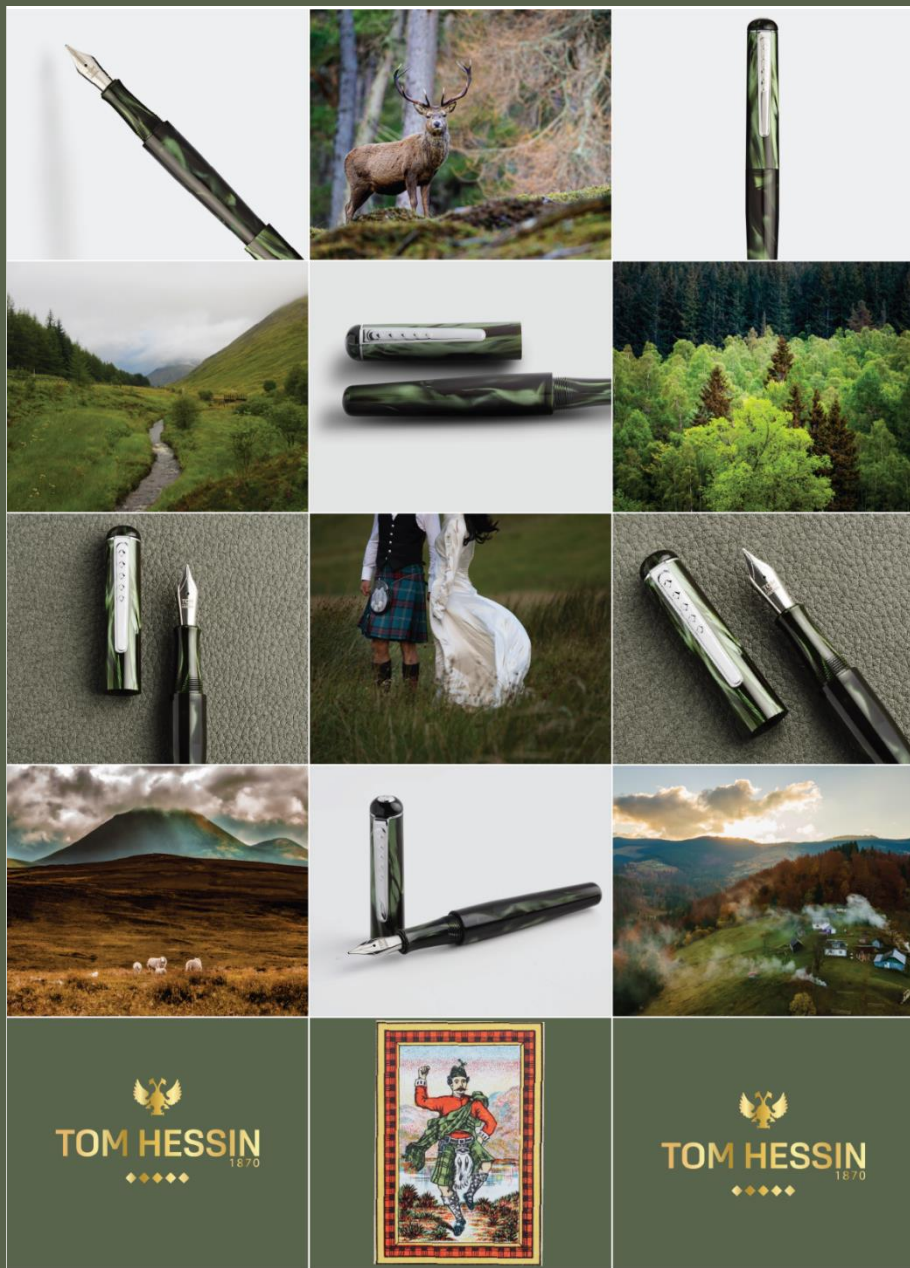
TOM HESSIN
1870



Charles Highland Green



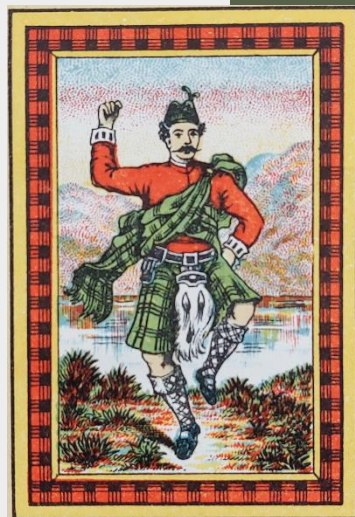
Charles Highland Green



Echoing the essence of the Highlands, the Highland Green pen captures the vibrant hues of moss-covered rocks and mist-laden hills. Like the Highlands themselves, this pen invites you to create your own timeless story, one written in nature's palette.



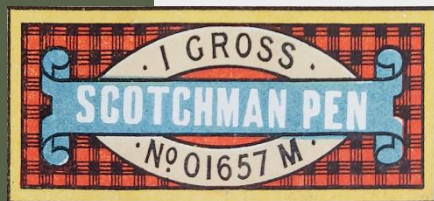
Charles Highland Green



Charles Highland Green

CHARLES HIGHLAND GREEN Fountain Pen is inspired by the original Scotchman Pen. Chosen in Highland Green this model is an elegant green that will be suitable for all your special occasions. From marking your map on hikes in the Highlands with friends, to keeping your pocket company at a business meeting- this pen has it all.

Today the TOM HESSIN: CHARLES HIGHLAND GREEN is a beautiful collaboration of Modern Heritage. A fountain pen, carefully crafted using high grade European resin with an elegant and modern finish. The green tones of the pen are depicted from T Hessin beginnings from the original Scotchman Pen and now are modernised for a sophisticated pen that will stand the test of time.



Charles Highland Green



Our 'inkspiration'



Birmingham Noir (30ml)



Highland Green (30ml)



Signature Blue (30ml)

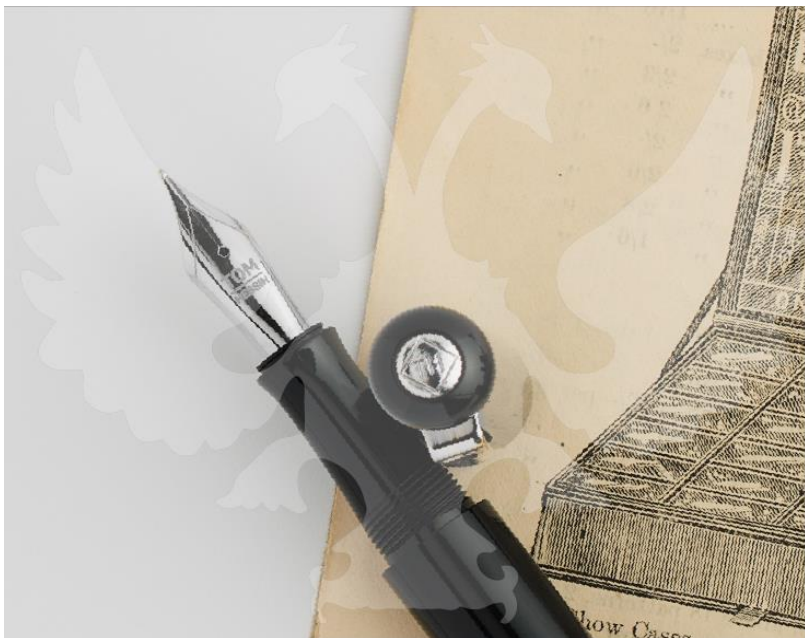


Exhibition Red (30ml)

Get 'inkspired' with our Tom Hessin inks.
Featuring a wide neck bottle and elegant
gold cap. Can be used across our Tom
Hessin ranges with the use of a converter.



It's all in the detail



Discover the
Charles Collection

RETAIL: See Price List

PEN BODY: High grade European Resin

MECHANISM: FP

NIBS: F Iridium / M Iridium / B Iridium / Ex
Fine Flexi / 1.5mm Calligraphy

NIB FINISH: Polished

FILLING: Ink Cartridge/ Converter

CLOSE: Twist Close

CLIP DETAIL: Polished with 5 diamond detail

END STUD: Marked with TH Logo

TRIM: Polished stainless steel Nib, Chrome plated
Coin & Clip.

PACKAGING: Luxury Box, soft touch platform,
ribbon detail

ACCESSORIES included: Converter, x2 Cartridges,
Leaflet

REFILLS: Ink Cartridge/ Manuscript Converter

WARRANTY: Two year mechanical warranty

ASSETS: All assets, codes,
descriptions and price list
can be found [here](#) on
this link.



TOM HESSIN
1870



New in.



New Collection

REBEL COLLECTION

We've thought long and hard about our next developments and we want to continue to build on our heritage and legacy, and make pens that people enjoy using whatever the occasion.

Let us introduce...



TOM HESSIN
1870



REBEL COLLECTION



REBEL. With the click of a... pen! Birmingham's Industrial beginnings with a peaky vibe is the inspiration for Tom Hessin's Rebel Collection. Featuring gun metal trim and muted colours inspired by colours from the 19th Century, Birmingham, England.

REBEL COLLECTION



TOM HESSIN
1870



REBEL COLLECTION





REBEL

JEWELLERS ROUGE



REBEL

JEWELLERS ROUGE



TOM HESSIN
1870



Complete the look.

Add a touch of style with Rebel Jewellers Rouge - a striking colourway blending Tom Hessin's rich history with a modern vibe. Inspired by Tom Hessin's beginnings in the Jewellery Quarter, Birmingham - Jewellers Rouge reveals its colour and namesake from the jewellery compound used to polish precious metals. Fine writing has never looked so good!



TOM HESSIN
1870



REBEL COLLECTION



Fountain Pen. ExF, F, M



Rollerball



Ballpoint



Mechanical Pencil



Gift box presentation



REBEL

GARRISON GREEN





REBEL

TOM HESSIN
1870
◆◆◆◆◆
GARRISON GREEN

SHOP
COLLECTION

With the click of a...pen!

Introducing Tom Hessin's Rebel Collection in Garrison Green. With a trendy colour palette carefully chosen to reflect the peaky vibes of the 1920's and our rich industrial history in Birmingham, England. The candescent finish and Garrison inspired colourway is complete with gunmetal trim for an edgy and peaky twist. Garrison Green, strikes just the right balance between smart and casual to enhance your signature style.


TOM HESSIN
1870
◆◆◆◆◆



Fountain Pen. ExF, F, M



Rollerball



Ballpoint



Mechanical Pencil



Gift box presentation

It's all in the detail

RETAIL

- See Price List

MECHANISM

- FP/ RB / BP / MP

FP NIB DETAIL

- FP NIBS: ExF / F / M (Fountain only)
- FP NIB FINISH: Polished JoWo Nib with Tom Hessin featured logo

REFILLS

- FP FILLING: Standard international size ink cartridge/ Converter
- RB REFILL: Compatible with many branded refills
- BP REFILL: Compatible with many branded refill
- MP REFILL: Compatible with many branded refills

PEN DETAIL

- Metal pen, elegant smooth lacquer finish
- Gunmetal clip with five diamond legacy detail
- Comfortable gunmetal grip section (FP, RB)
- Gunmetal end stud marked with bird emblem

PACKAGING

- Luxury Tom Hessin branded box
- Luxe foil blocked Tom Hessin logo to box top
- Soft touch platform with ribbon detail
- Pen leaflet

ACCESSORIES:

- FP: Converter, x1 Standard black ink cartridge, Leaflet
- RB: Black refill included
- BP: Black refill included
- MP: Lead included

WARRANTY:

- Two year mechanical warranty



DOWNLOAD ASSETS [HERE](#)



TOM HESSIN

1870



New in.



New Collection

EDINBURGH

Whit's fur ye'll no go by ye



TOM HESSIN
1870





Stand out good.

EDINBURGH COLLECTION. We've found inspo from our archives and across this vibrant and historic city. Stand out with the new Edinburgh collection by Tom Hessin. With a wood finished barrel and chrome trim, this pen will look the part at the Fringe festival and whenever you want to make a statement.



EDINBURGH COLLECTION



Stockbridge Stone

Forth Bridge Red



Stand Out.





Forth Bridge Red

Tom Hessin's Edinburgh Forth Bridge Red design is inspired by the iconic Forth Bridge landmark in Scotland, bringing together Tom Hessin's historic links with this vibrant city and the original 'Edinburgh Pen'. From the Edinburgh Collection, Forth Bridge Red imitates the changing red hues and dramatic shadows of this unforgettable structure.



EDINBURGH COLLECTION



Wooden finish with Forth
Bridge Red inspired design.
Chrome trim. Five diamond
legacy clip detail.

3 Mechanisms Available;

Fountain Pen

Rollerball

Ballpoint


TOM HESSIN
1870
◆◆◆◆

EDINBURGH COLLECTION



Fountain Pen. ExF, F, M



Rollerball



Ballpoint



Gift box presentation




TOM HESSIN
1870
♦♦♦♦





Stockbridge Stone

Stockbridge Stone by Tom Hessin draws inspiration from the tonal colours of Edinburgh's historic Stockbridge area and Tom Hessin's 'Edinburgh Pen' archives. Part of the Edinburgh Collection, this design holds a deeper significance. 'Stockbridge' is the family name running from the 4th generation of Hessin legacy - a subtle yet significant tribute.



Wooden finish with Forth Bridge Red inspired design.

Chrome trim. Five diamond legacy clip detail.

3 Mechanisms Available;

Fountain Pen

Rollerball

Ballpoint



EDINBURGH COLLECTION



Fountain Pen. ExF, F, M



Rollerball



Ballpoint



Gift box presentation

It's all in the detail

RETAIL

- See Price List

MECHANISM

- FP/ RB / BP

FP NIB DETAIL

- FP NIBS: ExF / F / M (Fountain only)
- FP NIB FINISH: Polished JoWo Nib with Tom Hessin featured logo

REFILLS

- FP FILLING: Standard international size ink cartridge/ Converter
- RB REFILL: Compatible with many branded refills
- BP REFILL: Compatible with many branded refill

PEN DETAIL

- Wood finished pen with smooth barrel
- Chrome clip with five diamond legacy detail
- Comfortable chrome grip section (FP, RB)
- Chrome end stud marked with bird emblem

PACKAGING

- Luxury Tom Hessin branded box
- Luxe foil blocked Tom Hessin logo to box top
- Soft touch platform with ribbon detail
- Pen leaflet

ACCESSORIES:

- FP: Converter, x1 Standard black ink cartridge, leaflet
- RB: Black refill included
- BP: Black refill included

WARRANTY:

- Two year mechanical warranty



DOWNLOAD
ASSETS [HERE](#)

Five generations of expertise



Andrew **Charles**
(1833 – 1910)



TOM HESSIN **Charles**
(1871 – 1938)



Arthur **Charles**
(1914 – 2001)



Malissa **Charles** m.
Nicolas Stockbridge



Charles Stockbridge

Our Quality Promise

QUALITY CONTROL

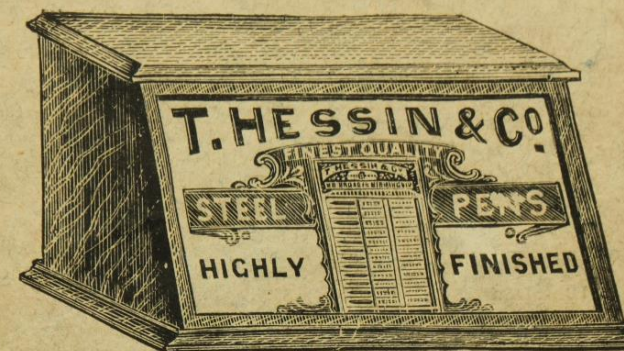
Each of our **TOM HESSIN pens** undergo an in-house and rigorous quality control process, each reviewed by our experienced and trained team with skills passed down through generations.

MECHANICAL WARRANTY

TOM HESSIN fountain pens may be repaired or replaced in the case of mechanical failure within a period of 2 years from the date of purchase. This guarantee does not cover damage for improper use or normal wear. In all cases, proof of purchase must be provided.

REPAIRS CONTACT

Customers with mechanical enquiries relating to their TOM HESSIN pen can be directed to Manuscript Brands. Please email the dedicated repairs team at repairs@manuscriptpen.com



This Case contains

		Retail at	£	s.	d.
6 gross, No. 220, Glide Pens	...	1/2 per gross...	=0	7	0
6 " " 221, Edinburgh Pens	...	1/3 " "	=0	7	6
6 " " 223, Swallow " "	...	1/2 " "	=0	7	0
6 " " 296, Thames " "	...	3/- " "	=0	18	0
6 " " 303, Mercantile " "	...	1/- " "	=0	6	0
6 " " 498, Conway " "	...	1/6 " "	=0	9	0
6 " " 499, Rifleman " "	...	1/6 " "	=0	9	0
6 " " 507, Embossed J " "	...	1/6 " "	=0	9	0
6 " " 451, Parcel Post Pens	...	2/- " "	=0	12	0
6 " " 542, Fawcett " "	...	1/6 " "	=0	9	0
6 " " 567, Battery " "	...	2/6 " "	=0	15	0
6 " " 569, Thunder " "	...	2/6 " "	=0	15	0
6 " each Box containing 1 pen each, 144 different kinds	...	2/- " "	=0	12	0
11 " Accommodation Boxes, containing 12 pens each, 12 kinds	...	1/6 " "	=0	16	6
5 dozen 6d. Boxes, some of each above pens	...	6/- " "	=1	16	0
1 gross 1d. Sample Cards, 12 pens on a Card	...	12/- " "	=0	12	0
Total Retail Value			£	10	0

Attractive Show Case, worth £1, free.

Price of case complete, £5 net.

For illustrations of above Pens, see page 12.

A rich history in writing



T.Hessin & Co was established by Andrew Charles in 1870, the year of the birth of his son, Thomas Hessin Charles. Andrew had come over to England from Ireland in 1850 as a young man of 18 years.

In September 1860, Tom Hessin established a business in Swan Passage, Birmingham, UK, initially producing pearl buttons made from sea shells imported from South Africa and manufactured by home workers.

From 1870 Tom Hessin expanded his businesses under the umbrella of T.Hessin & Co into the manufacture of pen nibs and sundry stationers' supplies, based at 68 Broad Street, Birmingham as well as sewing needles and fish hooks, based in Redditch.



Ownership of the business passed to Tom Hessin's son. In 1930 Thomas' son, Arthur, joined the Company at the age of 17. (Arthur Charles was the Grandfather to current owner, Charlie Stockbridge).

The pen nib manufacturing side of the business (under the name of T.Hessin & Co) only became a Limited Company in 1933. Whilst producing high volumes of pen nibs (10,000 to 15,000 gross per week), it was one of the smaller Birmingham based nib manufacturers.

Reputedly, Birmingham was the largest manufacturing centre for pen nibs worldwide, annually producing and exporting billions of pen nibs to markets all over the world.



Thomas died in 1938 and ownership passed to his son Arthur. In the same year, the Company ceased trading because Arthur (as well as his two brothers Andrew and Robin) anticipated the outbreak of World War II, & joined the Royal Warwickshires.

Whilst still dormant, T.Hessin & Co Ltd is now part of the Highley Pens Ltd Group, owned by the Stockbridge family. Malissa, the daughter of Arthur, married Nicolas Stockbridge in 1973. In 1989 they established the Manuscript Pen Company Ltd, with the intention of continuing the family's long association with Writing Instruments. Their son, Charlie, joined the family business in 2009 and was appointed Managing Director of Manuscript in January 2016. Charles is the fifth generation of his family to be involved in the same trade.





TOM HESSIN
1870

