



# TOM HESSIN

1870



Join the conversation.  
[@TomHessin](#)



Follow us on Instagram  
[@tom.hessin1870](#)



Subscribe to find out more  
on [YouTube](#)  
[@TomHessin1870](#)

[www.tomhessin.com](http://www.tomhessin.com)



# Charles Collection

Bringing HERITAGE, expertise, creativity and contemporary design to create fine writing instruments for everyday writing. The TOM HESSIN, CHARLES COLLECTION is an enviable design that will doubtlessly be the eye-candy of every office meeting, and will flawlessly carry you through to any album-worthy signature occasion.

The CHARLES COLLECTION is the culmination of five generations in the pen industry; each generation represented by a diamond design elegantly depicted in the clip detail. With expertise dating back to 1870, the CHARLES COLLECTION earns its moniker from the 'Charles' name that spans the family tree.



**TOM HESSIN**  
1870  
◆◆◆◆



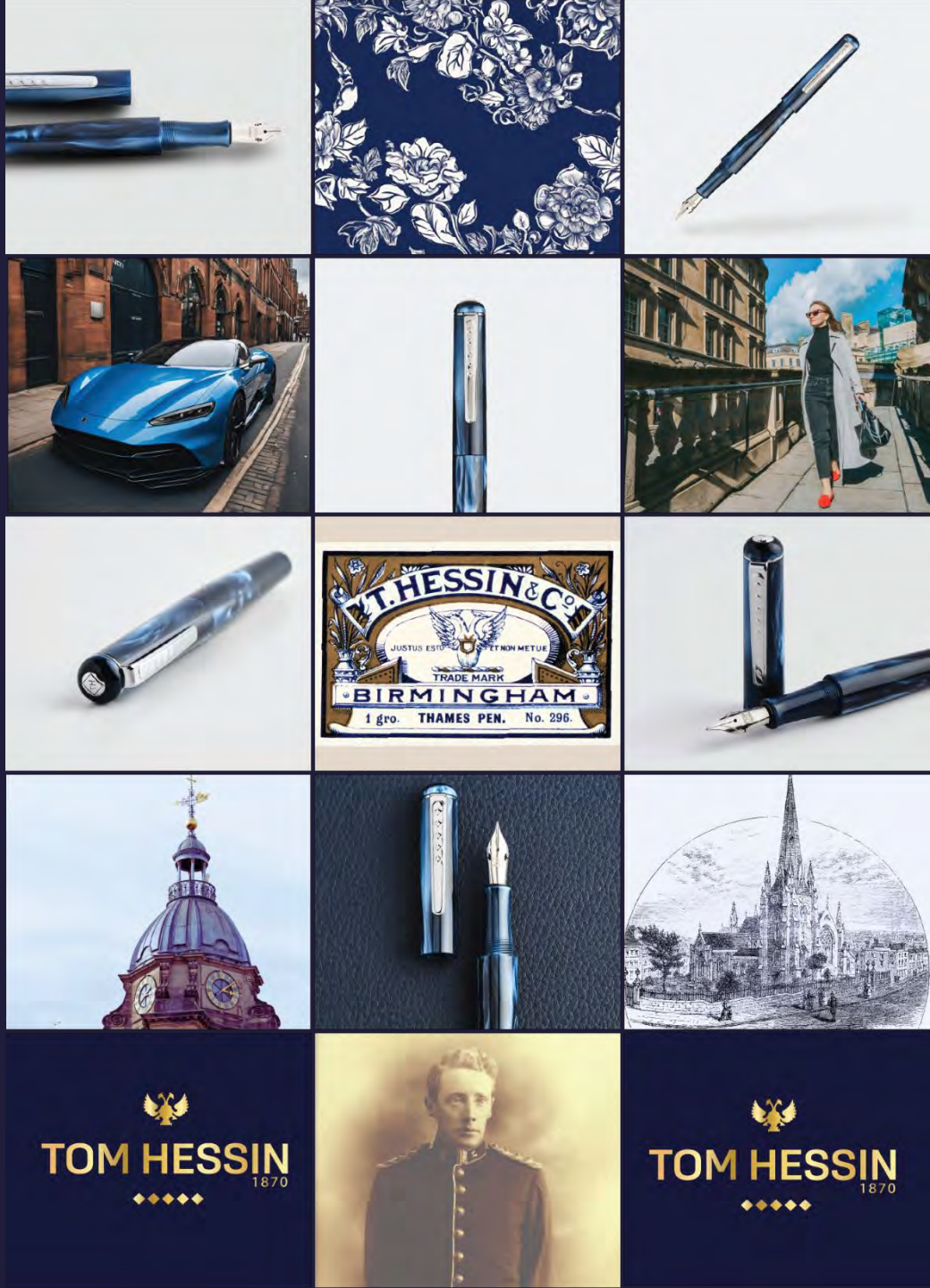


**TOM HESSIN**  
1870



*Charles Signature Blue*

Charles Signature Blue





# Charles Signature Blue



## Charles Signature Blue

CHARLES SIGNATURE BLUE Fountain Pen is inspired by the original T. HESSIN & CO logo. SIGNATURE BLUE has been carefully chosen, depicting the blue tones of old, and now bringing together to create a pen that embodies MODERN HERITAGE.

Today the TOM HESSIN, SIGNATURE BLUE is a fountain pen, carefully crafted using high grade European resin with an elegant and modern finish. The navy blue tones of the pen are interspersed with complimentary blue tones for a truly unique Fountain Pen that will complement any top pocket or clutch.



*Charles Signature Blue*







**TOM HESSIN**  
1870



*Charles Birmingham Noir*



Charles Birmingham Noir





# Charles Birmingham Noir



## Charles Birmingham Noir

CHARLES BIRMINGHAM NOIR will take you straight from the office to a working lunch. A Fountain Pen inspired by 18<sup>th</sup> Century heritage in Birmingham's Jewellery Quarter. Once the centre of a thriving global pen industry, Birmingham is now the UK's second city with a vibrant and trendy scene.

BIRMINGHAM NOIR is a fountain pen, carefully crafted using high grade European resin with an elegant and modern finish. The black finish of the pen represent the industrial era, and modernised with a glossy tapered barrel and chrome trims.



**TOM HESSIN**

1870



*Charles Birmingham Noir*







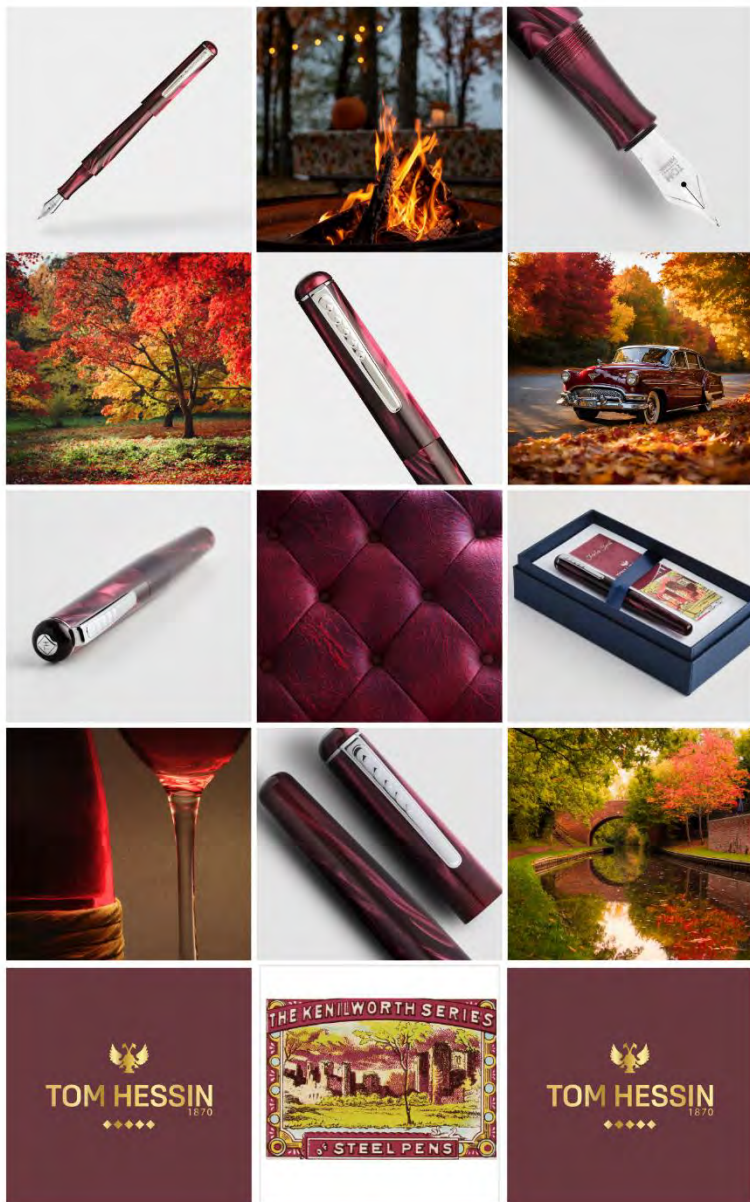
**TOM HESSIN**  
1870



*Charles Castle Claret*



# Charles Castle Claret

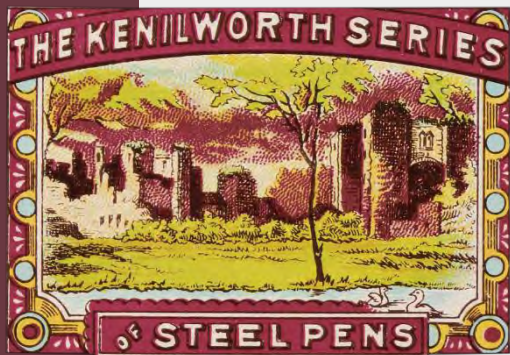


Put on the fire, grab a blanket and  
enjoy a little bit of cosy quiet with  
your Tom Hessin, Castle Claret  
fountain pen.





# Charles Castle Claret



## Charles Castle Claret

CHARLES CASTLE CLARET Fountain Pen is inspired by The Kenilworth Series of Steel Pens, once produced for Kenilworth Castle by T.Hessin.

Today the TOM HESSIN, CHARLES CLARET is a beautiful collaboration of Modern Heritage. A fountain pen, carefully crafted using high grade European resin with an elegant and modern finish. The claret tones of the pen are inspired from T Hessin beginnings with the original 'The Kenilworth Series of Steel Pens' and now are reimagined for a sophisticated pen that will stand the test of time.



Charles Castle Claret







**TOM HESSIN**  
1870



*Charles Exhibition Red*



# Charles Exhibition Red



*Inspired by the romance of Paris at Christmas, the Exhibition Red fountain pen brings the season to life. From cosy café notes to reflections on historic boulevards, the Exhibition Red fountain pen is your constant companion.*





# Charles Exhibition Red



## Charles Exhibition Red

CHARLES EXHIBITION RED Fountain Pen is inspired by The Exhibition Pen, inspired by the 1878 Paris Exhibition, by T.Hessin.

Today the TOM HESSIN, EXHIBITION RED is a beautiful collaboration of Modern Heritage. A fountain pen, carefully crafted using high grade European resin with an elegant and modern finish. The bright red tones of the pen are inspired from T Hessin beginnings with the original "Exhibition Pen" and now are reimagined for a sophisticated pen that will stand the test of time.



# Charles Exhibition Red



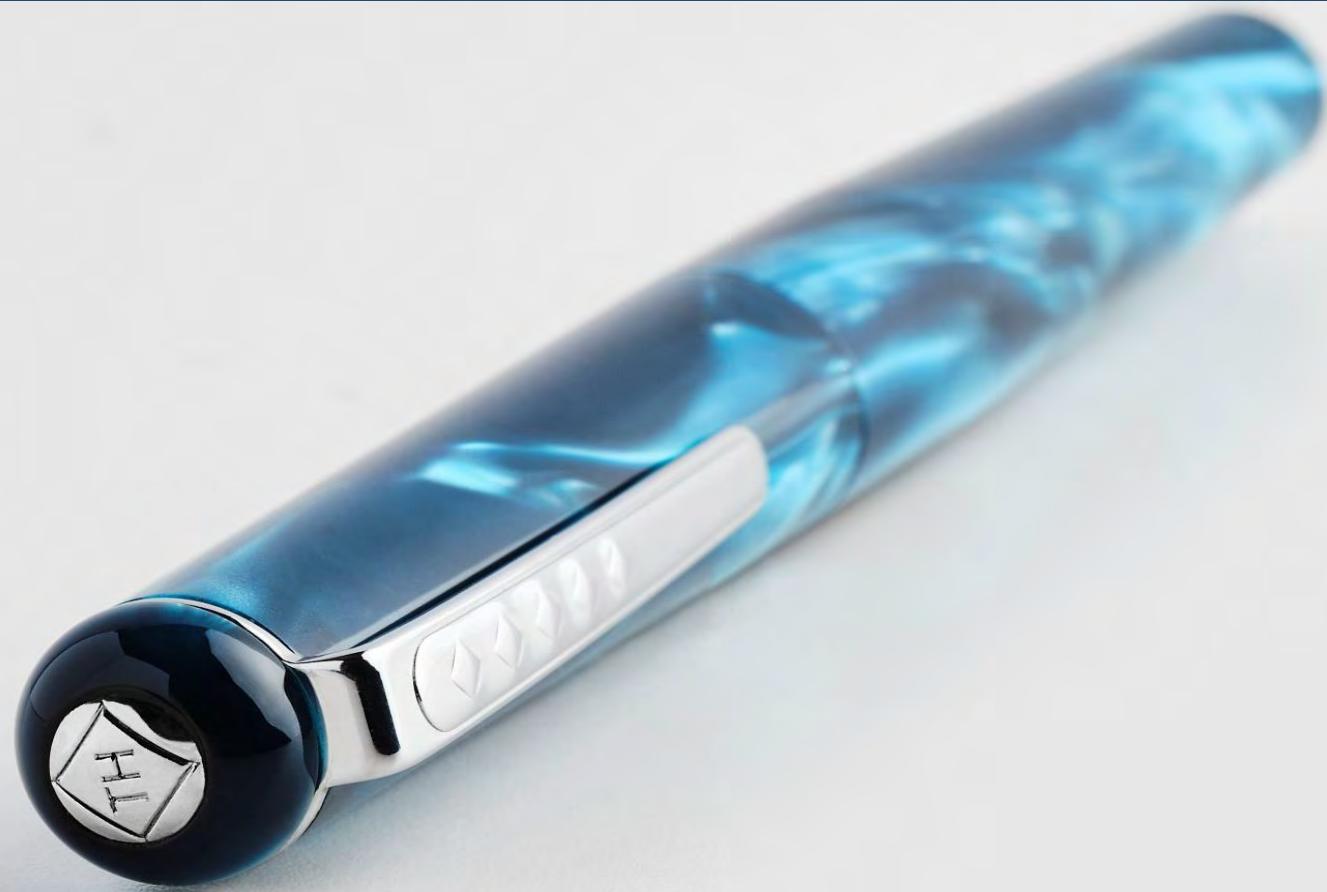




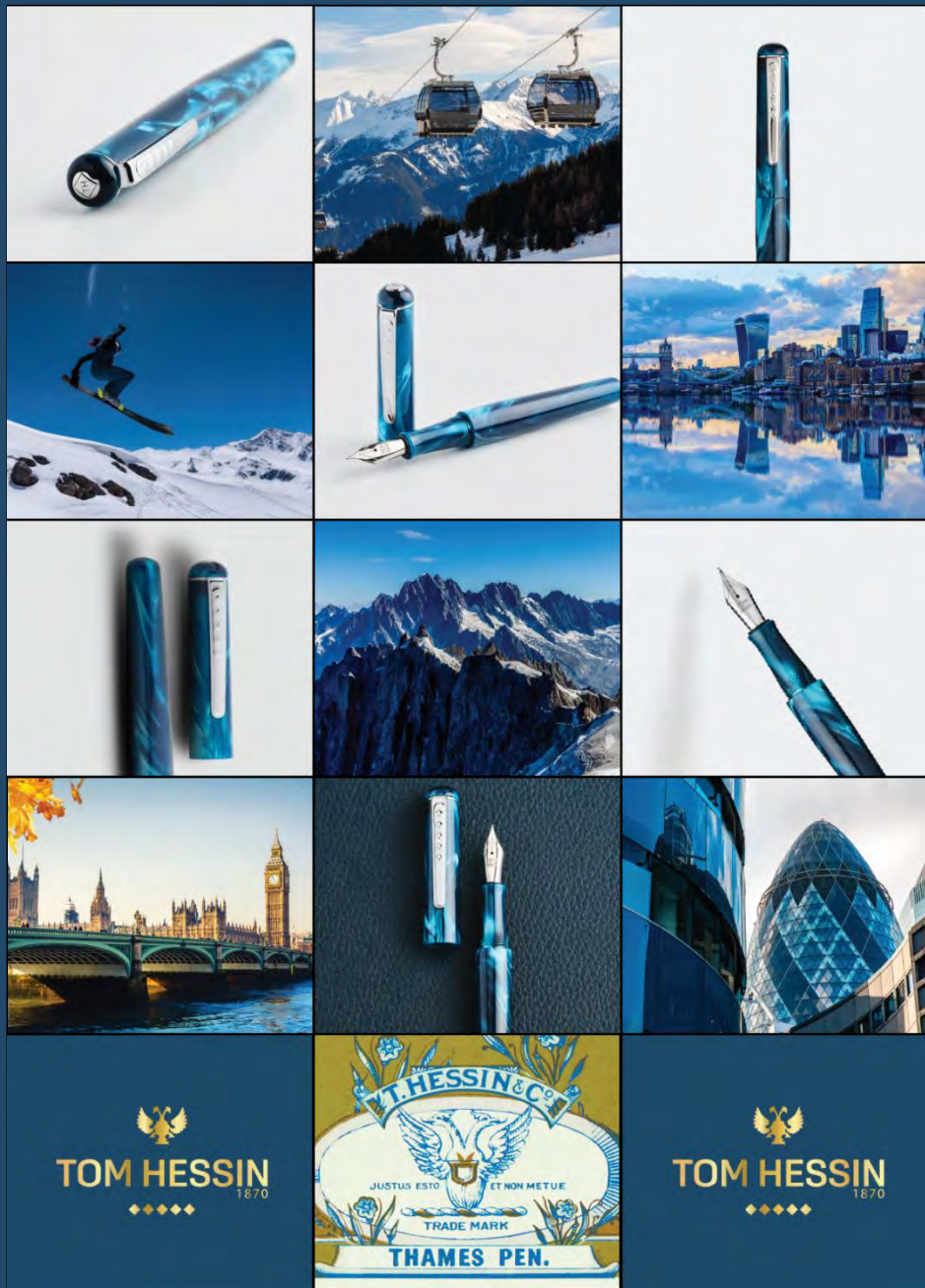
**TOM HESSIN**  
1870




*Charles Thames Blue*



# Charles Thames Blue



From the city to the slopes, let the  
Thames Blue pen be your companion.  
Whether you're jotting notes at the office  
or journaling at the chalet, Tom  
Hessin has got you covered. 





# Charles Thames Blue



## Charles Thames Blue

CHARLES THAMES BLUE Fountain Pen is inspired by a summer's day on the river Thames, reflecting glorious hues on the iconic architecture that line the capital's great river. When turned in the hand, this pen enjoys changing light, creating intrigue wherever you go. Whether you're working at Canary Wharf or heading to the slopes, the CHARLES THAMES BLUE is an enviable choice.

Today the TOM HESSIN: CHARLES THAMES BLUE is a beautiful collaboration of Modern Heritage. A fountain pen, carefully crafted using high-grade European resin with an elegant and modern finish. The name 'Thames' has been inspired from a heritage dating back to T.Hessin & Co.



Charles Thames Blue







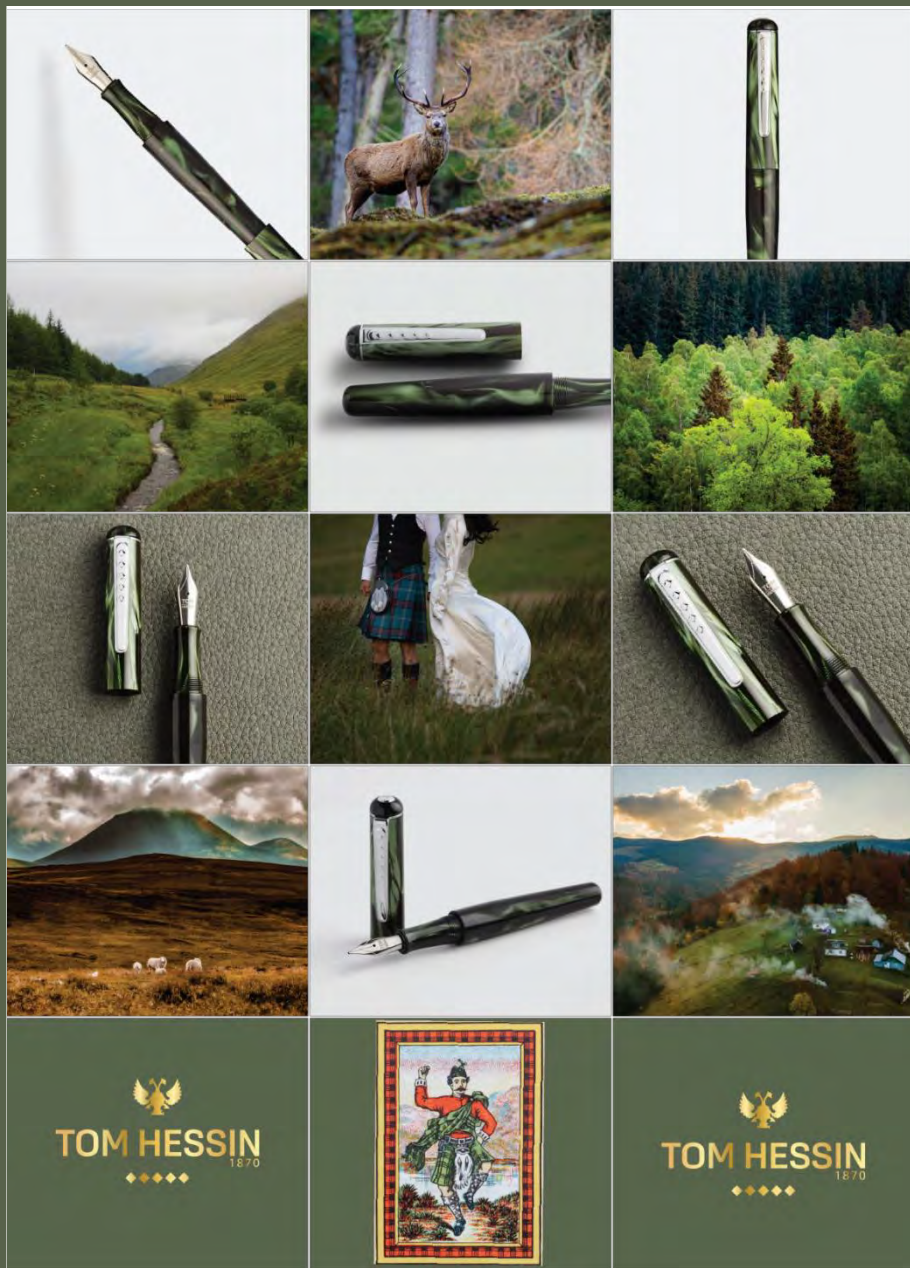
TOM HESSIN  
1870



*Charles Highland Green*



# Charles Highland Green



*Echoing the essence of the Highlands, the Highland Green pen captures the vibrant hues of moss-covered rocks and mist-laden hills. Like the Highlands themselves, this pen invites you to create your own timeless story, one written in nature's palette.*



  
**TOM HESSIN**  
1870  
◆◆◆◆



  
**TOM HESSIN**  
1870  
◆◆◆◆

# Charles Highland Green



## Charles Highland Green

CHARLES HIGHLAND GREEN Fountain Pen is inspired by the original Scotchman Pen. Chosen in Highland Green this model is an elegant green that will be suitable for all your special occasions. From marking your map on hikes in the Highlands with friends, to keeping your pocket company at a business meeting- this pen has it all.

Today the TOM HESSIN: CHARLES HIGHLAND GREEN is a beautiful collaboration of Modern Heritage. A fountain pen, carefully crafted using high grade European resin with an elegant and modern finish. The green tones of the pen are depicted from T Hessin beginnings from the original Scotchman Pen and now are modernised for a sophisticated pen that will stand the test of time.





Charles Highland Green



# Our 'inkspiration'



Birmingham Noir (30ml)



Highland Green (30ml)



Signature Blue (30ml)



Exhibition Red (30ml)

Get 'inkspired' with our Tom Hessin inks.  
Featuring a wide neck bottle and elegant  
gold cap. Can be used across our Tom  
Hessin ranges with the use of a converter.



*It's all in the detail*



Discover the  
*Charles Collection*

RETAIL: See Price List

PEN BODY: High grade European Resin

MECHANISM: FP

NIBS: F Iridium / M Iridium / B Iridium / Ex  
Fine Flexi / 1.5mm Calligraphy

NIB FINISH: Polished

FILLING: Ink Cartridge/ Converter

CLOSE: Twist Close

CLIP DETAIL: Polished with 5 diamond detail

END STUD: Marked with TH Logo

TRIM: Polished stainless steel Nib, Chrome plated  
Coin & Clip.

PACKAGING: Luxury Box, soft touch platform,  
ribbon detail

ACCESSORIES included: Converter, x2 Cartridges,  
Leaflet

REFILLS: Ink Cartridge/ Manuscript Converter

WARRANTY: Two year mechanical warranty

ASSETS: All assets, codes,  
descriptions and price list  
can be found [here](#) on  
this link.





TOM HESSIN  
1870



New in.



# *New Collection*

# REBEL COLLECTION

We've thought long and hard about our next developments and we want to continue to build on our heritage and legacy, and make pens that people enjoy using whatever the occasion.

Let us introduce...



**TOM HESSIN**  
1870



REBEL COLLECTION



REBEL. With the click of a... pen! Birmingham's Industrial beginnings with a peaky vibe is the inspiration for Tom Hessin's Rebel Collection. Featuring gun metal trim and muted colours inspired by colours from the 19<sup>th</sup> Century, Birmingham, England.



**TOM HESSIN**  
1870





# REBEL COLLECTION



# REBEL COLLECTION



# REBEL

JEWELLERS ROUGE



  
**TOM HESSIN**  
1870  
◆◆◆◆

  
**TOM HESSIN**  
1870  
◆◆◆◆



# REBEL

JEWELLERS ROUGE



TOM HESSIN

1870



## Complete the look.

Add a touch of style with Rebel Jewellers Rouge - a striking colourway blending Tom Hessin's rich history with a modern vibe. Inspired by Tom Hessin's beginnings in the Jewellery Quarter, Birmingham - Jewellers Rouge reveals its colour and namesake from the jewellery compound used to polish precious metals. Fine writing has never looked so good!



TOM HESSIN

1870





# REBEL COLLECTION



Fountain Pen. ExF, F, M



Rollerball



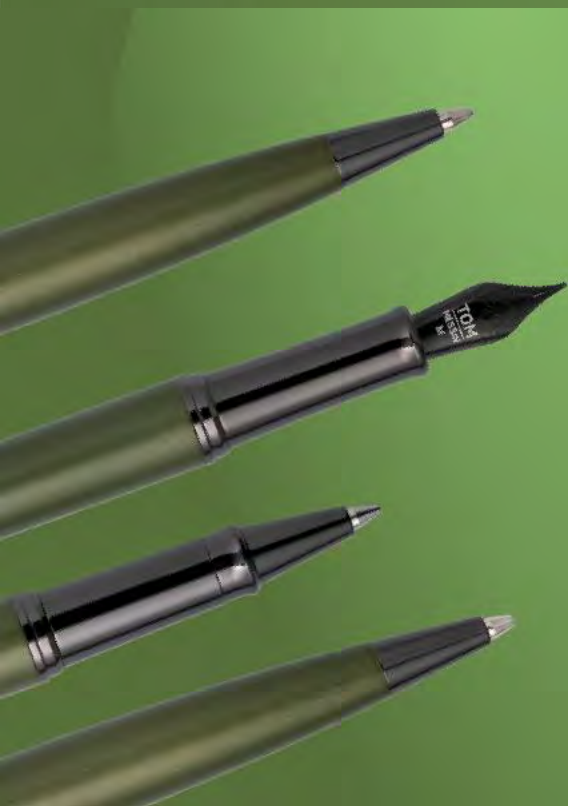
Ballpoint



Mechanical Pencil



Gift box presentation



# REBEL

GARRISON GREEN





REBEL  
TOM HESSIN  
1870  
GARRISON GREEN

SHOP  
COLLECTION

## With the click of a...pen!

Introducing Tom Hessin's Rebel Collection in Garrison Green. With a trendy colour palette carefully chosen to reflect the peaky vibes of the 1920's and our rich industrial history in Birmingham, England. The candescent finish and Garrison inspired colourway is complete with gunmetal trim for an edgy and peaky twist. Garrison Green, strikes just the right balance between smart and casual to enhance your signature style.

TOM HESSIN  
1870





Fountain Pen. ExF, F, M



Rollerball



Ballpoint



Mechanical Pencil



Gift box presentation

# *It's all in the detail*

## RETAIL

- See Price List

## MECHANISM

- FP/ RB / BP / MP

## FP NIB DETAIL

- FP NIBS: ExF / F / M (Fountain only)
- FP NIB FINISH: Polished JoWo Nib with Tom Hessin featured logo

## REFILLS

- FP FILLING: Standard international size ink cartridge/ Converter
- RB REFILL: Compatible with many branded refills
- BP REFILL: Compatible with many branded refill
- MP REFILL: Compatible with many branded refills. Pencil lead size is 0.7mm.

## PEN DETAIL

- Metal pen, elegant smooth lacquer finish
- Gunmetal clip with five diamond legacy detail
- Comfortable gunmetal grip section (FP, RB)
- Gunmetal end stud marked with bird emblem

## PACKAGING

- Luxury Tom Hessin branded box
- Luxe foil blocked Tom Hessin logo to box top
- Soft touch platform with ribbon detail
- Pen leaflet

## ACCESSORIES:

- FP: Converter, x1 Standard black ink cartridge, Leaflet
- RB: Black refill included
- BP: Black refill included
- MP: Lead included

## WARRANTY:

- Two year mechanical warranty



DOWNLOAD ASSETS [HERE](#)



# TOM HESSIN

1870



New in.





*New Collection*

EDINBURGH

*Whit's fur ye'll no go by ye*



**TOM HESSIN**  
1870





EDINBURGH

*Stockbridge Stone*



The original  
Edinburgh Pen  
produced by  
T.Hessin & Co was  
the inspiration for  
this collection.

RGH

Stand out good.

EDINBURGH COLLECTION. We've found inspo from our archives and across this vibrant and historic city. Stand out with the new Edinburgh collection by Tom Hessin. With a wood finished barrel and chrome trim, this pen will look the part at the Fringe festival and whenever you want to make a statement.



*Forth Bridge Red*





*Stockbridge Stone*

*Forth Bridge Red*





Stand Out.





**TOM HESSIN**

1870



## *Forth Bridge Red*

Tom Hessin's Edinburgh Forth Bridge Red design is inspired by the iconic Forth Bridge landmark in Scotland, bringing together Tom Hessin's historic links with this vibrant city and the original 'Edinburgh Pen'. From the Edinburgh Collection, Forth Bridge Red imitates the changing red hues and dramatic shadows of this unforgettable structure.





# EDINBURGH COLLECTION



Wooden finish with Forth  
Bridge Red inspired design.  
Chrome trim. Five diamond  
legacy clip detail.

3 Mechanisms Available;

Fountain Pen

Rollerball

Ballpoint



**TOM HESSIN**  
1870





# EDINBURGH COLLECTION



Fountain Pen. ExF, F, M



Rollerball



Ballpoint



Gift box presentation









TOM HESSIN

1870



## Stockbridge Stone

Stockbridge Stone by Tom Hessin draws inspiration from the tonal colours of Edinburgh's historic Stockbridge area and Tom Hessin's 'Edinburgh Pen' archives. Part of the Edinburgh Collection, this design holds a deeper significance. 'Stockbridge' is the family name running from the 4th generation of Hessin legacy - a subtle yet significant tribute.





Wooden finish with Forth Bridge Red inspired design.

Chrome trim. Five diamond legacy clip detail.

3 Mechanisms Available;

Fountain Pen

Rollerball

Ballpoint



# EDINBURGH COLLECTION



Fountain Pen. ExF, F, M



Rollerball



Ballpoint



Gift box presentation

*It's all in the detail*

#### RETAIL

- See Price List

#### MECHANISM

- FP/ RB / BP

#### FP NIB DETAIL

- FP NIBS: ExF / F / M (Fountain only)
- FP NIB FINISH: Polished JoWo Nib with Tom Hessin featured logo

#### REFILLS

- FP FILLING: Standard international size ink cartridge/ Converter
- RB REFILL: Compatible with many branded refills
- BP REFILL: Compatible with many branded refill

#### PEN DETAIL

- Maple wood pen with smooth barrel
- Chrome clip with five diamond legacy detail
- Comfortable chrome grip section (FP, RB)
- Chrome end stud marked with bird emblem

#### PACKAGING

- Luxury Tom Hessin branded box
- Luxe foil blocked Tom Hessin logo to box top
- Soft touch platform with ribbon detail
- Pen leaflet

#### ACCESSORIES:

- FP: Converter, x1 Standard black ink cartridge, leaflet
- RB: Black refill included
- BP: Black refill included

#### WARRANTY:

- Two year mechanical warranty



DOWNLOAD  
ASSETS [HERE](#)





**TOM HESSIN**  
1870



New in.

# REVOLUTION



# REVOLUTION

When it comes to our history in the pen industry, it really is unrivalled. Birmingham (England) is where it all began during the Industrial Revolution in 1870 as T.Hessin & Co. That's how long we've been designing and making pens. To honour this legacy we introduce to you our latest Tom Hessin collection... Revolution.

*New Collection*





## Revolution begins.

Here is where our Tom Hessin legacy begins... and the story of Revolution. In the 18<sup>th</sup> Century, T.Hessin & Co made pens right in the eye of the Industrial Revolution – in Birmingham, England. An iconic era that was instrumental in global pen manufacturing – a time of industrialisation that Birmingham has been historically referred to as the 'workshop of the world.'

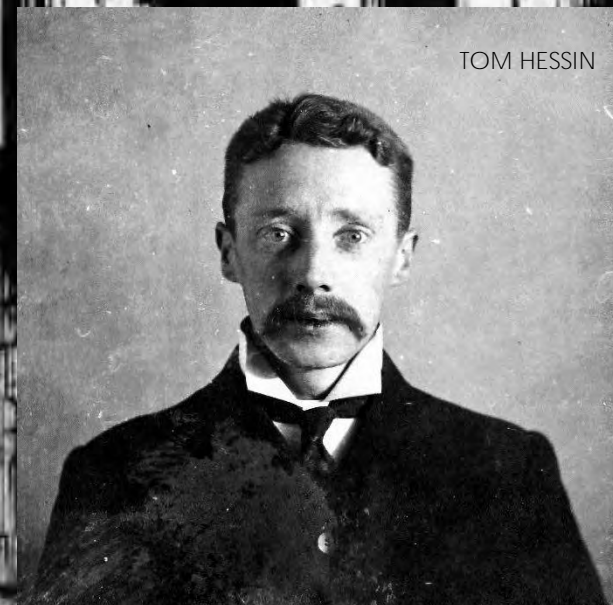




# REVOLUTION

Forged in British history.

Image from Hessin archives.







## Understated Sophistication.

Revolution is style and function. With gunmetal trim, Tom Hessin's Revolution in Charcoal has an understated sophistication. The ebony wood has a rich dark colour that is accentuated by the (intentionally interrupting) double metal ring detail of the barrel.



REVOLUTION  
Charcoal



# REVOLUTION

Ebony Wood.  
Gunmetal Trim.  
PVD Black Nib.



REVOLUTION  
Charcoal



# REVOLUTION

REVOLUTION  
Charcoal



  
**TOM HESSIN**  
1870  
◆◆◆◆



Fountain Pen. ExF, F, M



Rollerball



Ballpoint



Mechanical Pencil



Gift box presentation



REVOLUTION  
Charcoal



Revolution Charcoal is available in single pen or double pen gift set. The double pen set features an additional ballpoint pen with refill included. Pen rests on a soft touch cushion with blue legacy ribbon colourway detail, and blue luxe box with Tom Hessin foil block lid detail. Refills and accessories under cushion.



  
**TOM HESSIN**  
1870  
◆◆◆◆◆

REVOLUTION



# REVOLUTION

## REVOLUTION Charcoal

## MODERN HERITAGE

Bird emblem featured on the end stud. An iconic part of Hessin legacy dating back to the 1800s.

Charcoal colourway with ebony wood barrel and understated real wood grain in the pen details.

Unique engraved five diamond legacy clip detail, each representing the five generations that span the Tom Hessin family tree. Durable steel clip.

TOM HESSIN branded gunmetal band featuring charming bronze coloured lettering.

Raised double band detail on the barrel in complementary gunmetal design.

The fountain pen includes steel Jowo nib with TOM HESSIN branded detail and nib width. PVD black finish.

*History at your fingertips.*

  
**TOM HESSIN**  
1870



# Industrial Rustic

Distinct in its combination of rustic and industrial style. With wooden barrel and gunmetal trim, Tom Hessin's Revolution in Rustic juxtaposes the natural warmth of walnut wood and the raw and industrial contemporary gunmetal trim.



REVOLUTION  
Rustic



# REVOLUTION

Walnut Wood.  
Gunmetal Trim.  
PVD Black Nib.



REVOLUTION  
Rustic



# REVOLUTION

REVOLUTION  
Rustic

  
**TOM HESSIN**  
1870  
◆◆◆◆



Fountain Pen. ExF, F, M



Rollerball



Ballpoint



Mechanical Pencil



Gift box presentation



REVOLUTION  
Rustic



REVOLUTION

Revolution Rustic is available in single pen or double pen gift set. The double pen set features an additional ballpoint pen with refill included. Pens rest on a soft touch cushion with blue legacy ribbon colourway detail, and blue luxe box with Tom Hessin foil block lid detail. Refills and accessories under cushion.





*It's all in the detail...*

#### RETAIL

- See Price List

#### MECHANISM

- FP/ RB / BP / MP

#### FP NIB DETAIL

- FP NIBS: ExF / F / M (Fountain only)
- FP NIB FINISH: PVD Jowo Nib with Tom Hessin featured logo

#### REFILLS

- FP FILLING: Standard international size ink cartridge/ Converter
- RB REFILL: Compatible with many branded refills
- BP REFILL: Compatible with many branded refill
- MP REFILL: Compatible with many branded refills. Pencil lead size is 0.7mm.

#### PEN DETAIL

- Metal and wood pen
- Steel clip with five diamond legacy detail
- Comfortable gunmetal grip section (FP, RB)
- Gunmetal end stud marked with bird emblem

#### PACKAGING

- Luxury Tom Hessin branded box
- Luxe foil blocked Tom Hessin logo to box top
- Soft touch platform with ribbon detail
- Pen leaflet

#### ACCESSORIES:

- FP: Converter, x1 Standard black ink cartridge, Leaflet
- RB: Black refill included, Leaflet
- BP: Black refill included, Leaflet
- MP: Lead included, Leaflet

#### WARRANTY:

- Two year mechanical warranty





# Our Quality Promise

## QUALITY CONTROL

Each of our TOM HESSIN pens undergo an in-house and rigorous quality control process, each reviewed by our experienced and trained team with skills passed down through generations.

## MECHANICAL WARRANTY

TOM HESSIN fountain pens may be repaired or replaced in the case of mechanical failure within a period of 2 years from the date of purchase. This guarantee does not cover damage for improper use or normal wear. In all cases, proof of purchase must be provided.

## REPAIRS CONTACT

Customers with mechanical enquiries relating to their TOM HESSIN pen can be directed to Manuscript Brands. Please email the dedicated repairs team at [repairs@manuscriptpen.com](mailto:repairs@manuscriptpen.com)



## This Case contains

		Retail at	£	s.	d.
6 gross, No. 220, Glide Pens	...	1/2 per gross...	=0	7	0
6 " " 221, Edinburgh Pens	...	1/3 " "	=0	7	6
6 " " 223, Swallow " "	...	1/2 " "	=0	7	0
6 " " 296, Thames " "	...	3/- " "	=0	18	0
6 " " 303, Mercantile " "	...	1/- " "	=0	6	0
6 " " 498, Conway " "	...	1/6 " "	=0	9	0
6 " " 499, Rifleman " "	...	1/6 " "	=0	9	0
6 " " 507, Embossed J " "	...	1/6 " "	=0	9	0
6 " " 451, Parcel Post Pens	...	2/- " "	=0	12	0
6 " " 542, Fawcett " "	...	1/6 " "	=0	9	0
6 " " 567, Battery " "	...	2/6 " "	=0	15	0
6 " " 569, Thunder " "	...	2/6 " "	=0	15	0
6 " each Box containing 1 pen each, 144 different kinds	...	2/- " "	=0	12	0
11 " Accommodation Boxes, containing 12 pens each, 12 kinds	...	1/6 " "	=0	16	6
5 dozen 6d. Boxes, some of each above pens	...	6/- " "	=1	16	0
1 gross 1d. Sample Cards, 12 pens on a Card	...	12/- " "	=0	12	0
Total Retail Value			£	10	0

Attractive Show Case, worth £1, free.

**Price of case complete, £5 net.**

For illustrations of above Pens, see page 12.

# Five generations of expertise



Andrew Charles  
(1833 – 1910)



TOM HESSIN Charles  
(1871 – 1938)



Arthur Charles  
(1914 – 2001)



Malissa Charles m.  
Nicolas Stockbridge



Charles Stockbridge



# A rich history in writing



T.Hessin & Co was established by Andrew Charles in 1870, the year of the birth of his son, Thomas Hessin Charles. Andrew had come over to England from Ireland in 1850 as a young man of 18 years.

In September 1860, Andrew Charles established a business in Swan Passage, Birmingham, UK, initially producing pearl buttons made from sea shells imported from South Africa and manufactured by home workers.

From 1870 Tom Hessin expanded his businesses under the umbrella of T.Hessin & Co into the manufacture of pen nibs and sundry stationers' supplies, based at 68 Broad Street, Birmingham as well as sewing needles and fish hooks, based in Redditch.



Ownership of the business passed to Tom Hessin's son. In 1930 Thomas' son, Arthur, joined the Company at the age of 17. (Arthur Charles was the Grandfather to current owner, Charlie Stockbridge).

The pen nib manufacturing side of the business (under the name of T.Hessin & Co) only became a Limited Company in 1933. Whilst producing high volumes of pen nibs (10,000 to 15,000 gross per week), it was one of the smaller Birmingham based nib manufacturers.

Reputedly, Birmingham was the largest manufacturing centre for pen nibs worldwide, annually producing and exporting billions of pen nibs to markets all over the world.



Thomas died in 1938 and ownership passed to his son Arthur. In the same year, the company ceased trading because Arthur (as well as his two brothers Andrew and Robin) anticipated the outbreak of World War II, & joined the Royal Warwickshires.

Whilst still dormant, T.Hessin & Co Ltd is now part of the Highley Pens Ltd Group, owned by the Stockbridge family. Malissa, the daughter of Arthur, married Nicolas Stockbridge in 1973. In 1989 they established the Manuscript Pen Company Ltd, with the intention of continuing the family's long association with writing instruments. Their son, Charlie, joined the family business in 2009 and was appointed Managing Director of Manuscript in January 2016. Charles is the fifth generation of his family to be involved in the same trade.





# TOM HESSIN

1870



Join the  
conversation.  
[@TomHessin](#)



Follow us on  
Instagram  
[@tom.hessin1870](#)



Subscribe to find out  
more on [YouTube](#)  
[@TomHessin1870](#)

[www.tomhessin.com](http://www.tomhessin.com)