

PRODUCT CATALOG





The Chameleon Color & Blending System™

- The new Chameleon Color & Blending System gives artists color blending options like never before.
- The patented system allows you to color from light to dark, dark to light and color to color giving endless color blending possibilities.
- Combines Chameleon's multi-award winning "Chameleon Markers" with the viral sensation "Chameleon Color Tops".
- With 10 amazing packs designed by creatives, for creatives everyone, will find their "perfect pack".
- Each pack can create over 50 tones and blends!
- Each pack contains 1 x Chameleon Colorless Blender Pen, 5 x Chameleon Color Tops, 1 x Chameleon Mixing Chamber and 5 x Chameleon Markers
- 6 spare Chameleon Japanese Brush Nibs are included in each kit.
- Each kit contains an English instruction leaflet and a 15 language instruction leaflet

THE CHAMELEON COLOR & BLENDING SYSTEM™



Chameleon Color & Blending System # 1

ITEM# CS6601

6 Chameleon Markers

YL2 GR3 BV4 BK4 RD4 CB

5 Chameleon Color Tops™

QR4 YG3 NG4 PR4 RD5

CB 1 Chameleon
Mixing Chamber™

6 Chameleon
Japanese Brush Nibs™



Chameleon Color & Blending System # 2

ITEM# CS6602

6 Chameleon Markers

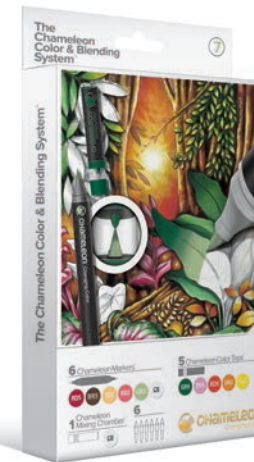
NU0 Y03 BL4 BG4 BL3 CB

5 Chameleon Color Tops™

BR1 BV4 BL2 BG1 RD2

CB 1 Chameleon
Mixing Chamber™

6 Chameleon
Japanese Brush Nibs™



Chameleon Color & Blending System # 7

ITEM# CS6607

6 Chameleon Markers

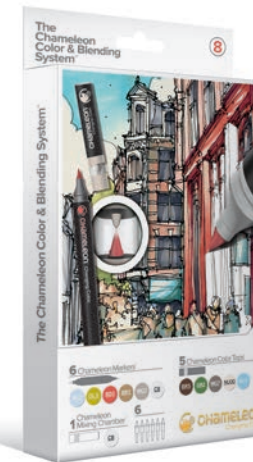
RD5 BR5 Y02 RD2 GR1 CB

5 Chameleon Color Tops™

GR4 PK4 RD4 OR3 YL2

CB 1 Chameleon
Mixing Chamber™

6 Chameleon
Japanese Brush Nibs™



Chameleon Color & Blending System # 8

ITEM# CS6608

6 Chameleon Markers

BL2 OL3 RD3 BR1 WG3 CB

5 Chameleon Color Tops™

BR5 GR2 WG7 NU00 BL3

CB 1 Chameleon
Mixing Chamber™

6 Chameleon
Japanese Brush Nibs™



Chameleon Color & Blending System # 3

ITEM# CS6603

6 Chameleon Markers

QR4 YG3 BL6 PR4 PK5 CB

5 Chameleon Color Tops™

BV2 BG4 VO4 BG3 NU1

CB 1 Chameleon
Mixing Chamber™

6 Chameleon
Japanese Brush Nibs™



Chameleon Color & Blending System # 4

ITEM# CS6604

6 Chameleon Markers

NU00 NU4 BR4 NU1 NU3 CB

5 Chameleon Color Tops™

BR3 NU0 NU2 PK2 NU3

CB 1 Chameleon
Mixing Chamber™

6 Chameleon
Japanese Brush Nibs™



Chameleon Color & Blending System # 9

ITEM# CS6609

6 Chameleon Markers

CG8 CG5 NG4 CG9 WG7 CB

5 Chameleon Color Tops™

OL3 WG3 CG8 CG9 BK4

CB 1 Chameleon
Mixing Chamber™

6 Chameleon
Japanese Brush Nibs™



Chameleon Color & Blending System #10

ITEM# CS6610

6 Chameleon Markers

BR2 BL7 VO4 PK4 BR3 CB

5 Chameleon Color Tops™

BR2 NU4 BR4 Y03 BL6

CB 1 Chameleon
Mixing Chamber™

6 Chameleon
Japanese Brush Nibs™



Chameleon Pens™

- One pen, multiple color tones!
- For simple, seamless, color gradations!
- Create depth, dimension, highlights, shading and shadows... all with one pen!
- Built to last, Chameleon Pens have nearly twice as much ink as a regular marker.
- Can also be used like a traditional marker
- Professional quality, with alcohol-based ink.
- Refillable, and have replaceable Japanese Nibs.
- Permanent on most surfaces (including: fabrics, glass, plastic and wood).
- Compatible with all other alcohol-based pens and inks.
- Perfect for aspiring amateurs, keen colorists, creative crafters, ambitious students, accomplished artists and design professionals.



Chameleon Pens™ 52 PEN SUPER SET



Including Detail Pen, Colorless Blender Pen, Case and Carry Strap
ITEM# CT5201



Chameleon Pens™

30 PEN AND CARRY CASE SET



Including Carry Strap
ITEM# CT3001



Chameleon Pens™

22 PEN DELUXE SET



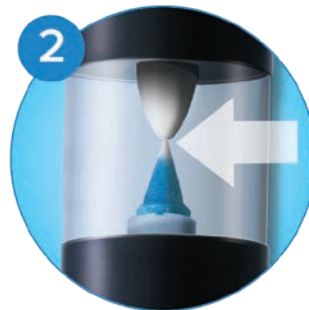
Including Detail Pen and
Colorless Blending Pen
ITEM# CT2201



30 and 22 pen set combined equal the complete 52 colors



Hold the pen in a vertical position.
Gently place the Mixing Chamber
onto the Brush Nib – the two Nibs will touch.



Keeping the pen in a vertical position,
hold and fuse for 15 seconds.



Remove the pen from the Mixing
Chamber.



Color in a side-to-side motion,
slightly overlapping the previous
line, all the way to the edges of the
image, working from light to dark for
a seamless blend.

Chameleon Pens™

5 PACKS

The Chameleon 5 Pen packs are a
great way to get into the Chameleon
Pens range.

These packs are made up of the 50
Chameleon Pen colors, broken down
into 10 individual sets. Each pack is
complete with detailed instructions that
have useful hints, tips and techniques.



Pastel Tones Set
ITEM# CT0501



Primary Tones Set
ITEM# CT0502



Earth Tones Set
ITEM# CT0503



Cool Tones Set
ITEM# CT0504



Gray Tones Set
ITEM# CT0509



Skin Tones Set
ITEM# CT0510



Warm Tones Set

ITEM# CT0511



Floral Tones Set

ITEM# CT0512



Blue Tones Set

ITEM# CT0513



Nature Tones Set

ITEM# CT0514

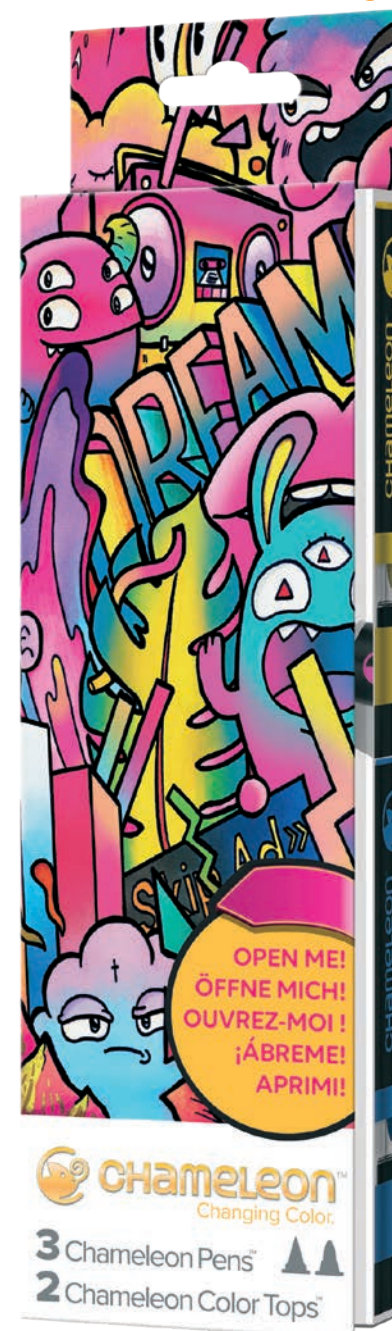
Chameleon Pens™ COLOURS

RD4 CRIMSON RED ITEM# CT0101	OR4 SEVILLE ORANGE ITEM# CT0102	Y03 WARM SUNSET ITEM# CT0103	YL2 SUMMER SUN ITEM# CT0104	YG3 SPRING MEADOW ITEM# CT0105
GR3 GRASS GREEN ITEM# CT0106	BG4 AQUA MARINE ITEM# CT0107	BL6 ROYAL BLUE ITEM# CT0108	BL3 SKY BLUE ITEM# CT0109	BV4 BLUE VIOLET ITEM# CT0110
VO4 DEEP VIOLET ITEM# CT0111	PR4 PURPLE GRAPE ITEM# CT0112	OL3 OLIVE GREEN ITEM# CT0113	BR5 BARK ITEM# CT0114	BR2 HOT COCOA ITEM# CT0115
BK4 DEEP BLACK ITEM# CT0116	CG8 COOL GRAY ITEM# CT0117	NU1 BISQUE ITEM# CT0118	PK3 BUBBLE GUM ITEM# CT0119	NU3 FAWN ITEM# CT0120
NU00 NEUTRAL ITEM# CT0123	NU0 SAND ITEM# CT0124	NU2 LIGHT PEACH ITEM# CT0125	NU4 CARAMEL ITEM# CT0126	BR4 BURNT UMBER ITEM# CT0127
BL2 BABY BLUE ITEM# CT0128	BL4 CORNFLOWER BLUE ITEM# CT0129	BL7 INDIGO ITEM# CT0130	BG1 LAGOON ITEM# CT0131	BG3 TURQUOISE ITEM# CT0132
PK2 DUSTY ROSE ITEM# CT0133	PK4 PEONY PINK ITEM# CT0134	PK5 FUCHSIA ITEM# CT0135	BV2 LAVENDER ITEM# CT0136	VO2 MAUVE ITEM# CT0137
Y02 MELLOW YELLOW ITEM# CT0138	OR3 TANGERINE ITEM# CT0139	RD2 RED CORAL ITEM# CT0140	RD3 VERMILION ITEM# CT0141	RD5 BURGUNDY ITEM# CT0142
BR1 TAUPE ITEM# CT0143	BR3 CINNAMON ITEM# CT0144	GR1 GREEN APPLE ITEM# CT0145	GR2 DARK SAGE ITEM# CT0146	GR4 EVERGREEN ITEM# CT0147
NG4 NEUTRAL GRAY 4 ITEM# CT0148	CG5 COOL GRAY 5 ITEM# CT0149	CG9 COOL GRAY 9 ITEM# CT0150	WG3 WARM GRAY 3 ITEM# CT0151	WG7 WARM GRAY 7 ITEM# CT0152
CB COLORLESS BLENDER ITEM# CT0121	D DETAIL PEN ITEM# CT0122			

Chameleon Introductory Kit

The perfect pack to introduce customers to the Chameleon system

- Contains both Chameleon Pens™ and Chameleon Color Tops™ Color combinations designed to produce over 20 brilliant color gradations, tones and blends.
- Pack has a fold open panel designed to clearly educate the 3 ways you can use the unique Chameleon system.
- Bold fresh package graphics with incredibly colorful stopping power.
- Designed to appeal to multiple customer groups - accomplished artists, design professionals, keen colorists, creative crafters, curious teens, aspiring amateurs and ambitious students.
- Eye-catching pack illustration by YouTube artist, Vexx. This art is available as a free download upon purchase. Also available are 4 videos, by Vexx, demonstrating the different ways you can use this pack.



ITEM# CT1003UK

3 Chameleon Pens™



2 Chameleon Color Tops™





Chameleon Color Tops™

- One pen, color-to-color blends!
- For simple, seamless color-to-color blends!
- Achieve tonal gradients, blend opposing colors or get creative and stack numerous Color Tops to achieve amazing blends.
- Add Chameleon Color Tops to your Chameleon Pens to get over 1000 color blending combinations!
- Professional quality, with alcohol-based ink.
- Refillable, and have replaceable Japanese Nibs.
- Permanent on most surfaces (including: fabrics, glass, plastic and wood).
- Compatible with all other alcohol-based pens and inks.
- Perfect for aspiring amateurs, keen colorists, creative crafters, ambitious students, accomplished artists and design professionals.

Refillable with high quality alcohol ink

Chamber Nib cap



Replaceable Mixing Chamber Nib



ITEM# CT4501

5 Pack Pastel Tones



ITEM# CT4502

5 Pack Primary Tones



ITEM# CT4503

5 Pack Earth Tones



ITEM# CT4504

5 Pack Cool Tones



ITEM# CT4509

5 Pack Gray Tones



ITEM# CT4510

5 Pack Skin Tones



ITEM# CT4511

5 Pack Warm Tones



ITEM# CT4512

5 Pack Floral Tones



ITEM# CT4513

5 Pack Blue Tones

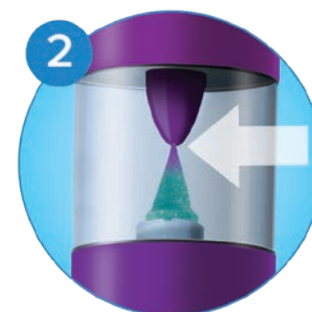


ITEM# CT4514

5 Pack Nature Tones



Hold the pen in a vertical position. Gently place the Color Top onto the Brush Nib – the two Nibs will touch.



Keeping the pen in a vertical position, hold and fuse for 15 seconds.



Remove the pen from the Color Top.



Color in a side-to-side motion, slightly overlapping the previous line, all the way to the edges of the image, working from color to color for a seamless blend.



color

like no other



Distribution by Manuscript Brands.

T: 01746 861236 W: www.manuscriptpen.com. A: Manuscript House, Netherton Lane, Highley, Bridgnorth, Shropshire, WV16 6BF. UK.